

## SPECIFICATIONS

### FLUSH HYDRANT VALVE CONTROLS

Polished brass 7" plate lettered HYDRANT VALVE CONTROL threaded 1-1/2" female N.P.T. on back and 2-1/2" N.S.T. male on front with cap and chain. Rough brass 1-1/2" N.P.T. lock nut, 30" long x 7/8" square steel extension rod with coupling for attachment to stem of gate valve.

### FREE STANDING HYDRANT VALVE CONTROLS

Polished brass round base plate lettered HYDRANT VALVE CONTROL threaded 1-1/2" x 16" long polished brass cover sleeve and cap chain. Rough brass 1-1/2" N.P.T. lock nut, 30" long x 7/8" square steel extension rod with coupling for attachment to stem of below grade gate valve.



## MODEL SELECTION

### FLUSH HYDRANT VALVE CONTROLS

5850

5852

### FREE STANDING HYDRANT VALVE CONTROLS

5855

## PRODUCT OPTIONS

### FINISHES:

-D Polished Chrome Plated

### VARIATION:

-H Valve Control Wrench

-2 For Valve with 2" SQ Head Specify 5850 Rod -2

Call Potter Roemer - Fire Pro for current listings and approvals. Dimensions are subject to manufacturer's tolerance and may change without notice. Potter Roemer - Fire Pro assumes no responsibility for use of void or superseded data. © Copyright Potter Roemer - Fire Pro, Member of Morris Group International™ Please visit [potterroemer.com](http://potterroemer.com) for most current specifications.

**5850-5855 SERIES** Date: 03/27/14

**MEMBERSHIP**



FIRE EQUIPMENT  
MANUFACTURERS'  
ASSOCIATION

**ONFSA**  
NATIONAL IRISE SPRINKLER ASSOCIATION, INC.



**CASPE**  
American Society of  
Plumbing Engineers



## POTTER ROEMER/FIRE PRO

Headquarters:  
P.O. Box 3527  
City of Industry, CA  
91744 U.S.A.  
Los Angeles Area  
800-366-3473  
626-855-4890

Also in:  
New York (800) 526-4592  
Chicago (800) 547-3473  
Atlanta (800) 762-0542  
Miami (866) 961-3473  
Dallas (866) 644-3473

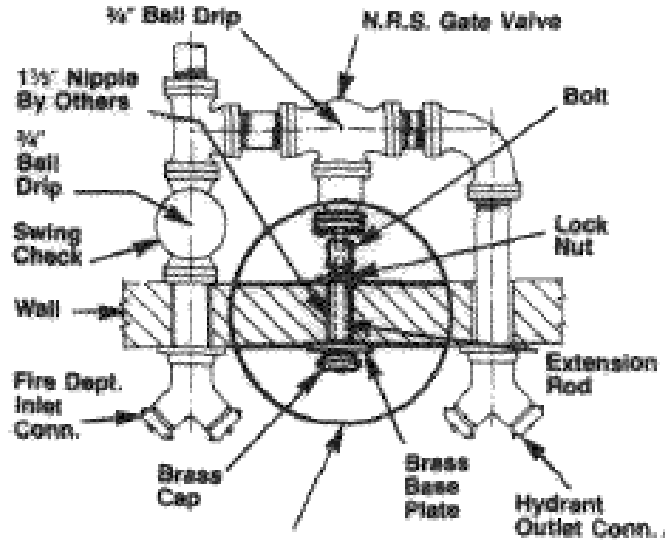
[www.potterroemer.com](http://www.potterroemer.com)

**HYDRANT VALVE CONTROL INSTALLATIONS**



**MODELS 5850 & 5852**

**FLUSH TYPE TYPICAL INSTALLATION**

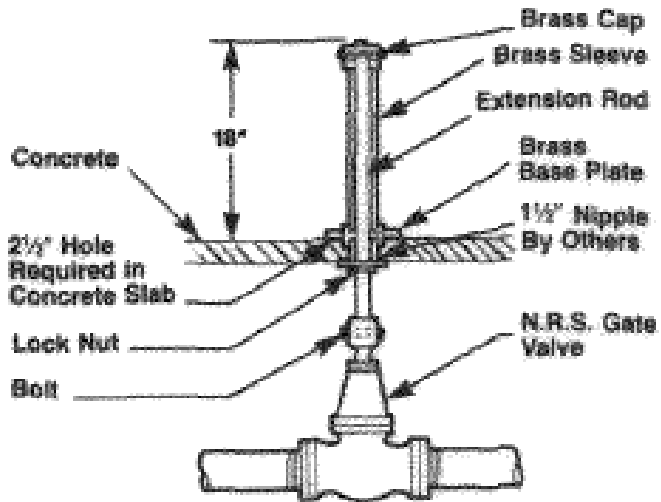


**HYDRANT VALVE CONTROL**

**FREE STANDING INSTALLATION**



**MODELS 5855**



Call Potter Roemer - Fire Pro for current listings and approvals. Dimensions are subject to manufacturer's tolerance and may change without notice. Potter Roemer-Fire Pro assumes no responsibility for use of void or superceded data. © Copyright Potter Roemer- Fire Pro, Member of Morris Group International™ Please visit [potterroemer.com](http://potterroemer.com) for most current specifications.

**5850-5855 SERIES** Date: 03/27/14

**MEMBERSHIP**



FIRE EQUIPMENT  
MANUFACTURERS'  
ASSOCIATION



**POTTER ROEMER/FIRE PRO**

Headquarters:  
P.O. Box 3527  
City of Industry, CA  
91744 U.S.A.  
Los Angeles Area  
800-366-3473  
626-855-4890

Also in:  
New York (800) 526-4592  
Chicago (800) 547-3473  
Atlanta (800) 762-0542  
Miami (866) 961-3473  
Dallas (866) 644-3473

[www.potterroemer.com](http://www.potterroemer.com)